

THINGS TO DO!

JEFFERSON MEMORIAL

www.nps.gov/thje/index.htm

A 19-foot bronze statue inside the neoclassical marble monument memorialized Thomas Jefferson. The memorial is located across the Tidal Basin near the Bureau of Engraving and Printing. Open Top Sightseeing Tour stops at the Memorial on the red and blue lines. The memorial is open 24 hours a day, seven days a week.

LINCOLN MEMORIAL

www.nps.gov/linc/index.htm

Located on the opposite end of the Mall from the Capitol, the Lincoln Memorial is one of the first sights to greet visitors into the city. Inside, a 19-foot marble statue of Lincoln is flanked by inscriptions of Lincoln's Gettysburg Address and his second Inaugural Address. The memorial is open 24 hours a day, seven days a week. Open Top Sightseeing Tour stops at the Memorial on the red and blue lines.

THE NATIONAL ZOO

<http://nationalzoo.si.edu>

The zoo has over 1,800 animals and is highlighted by its giant pandas, cheetahs, and indoor rainforest. The National Zoo is committed to education. There are learning stations located at just about every exhibit, so it is a great place for kids. The National Zoo is free for everyone and is open from 9:00 a.m. until 6:00 p.m. Take the Open Top Sightseeing Tour's green route to the Zoo.

WASHINGTON MONUMENT

www.nps.gov/wamo/index.htm

Get a bird's eye view of the nation's capital from the Washington Monument. This popular attraction is limited to ticketholders only. Tickets are required for all visitors ages 2 and up. Get free Washington Monument tickets at the Washington Monument Lodge on 15th Street adjacent to the Washington Monument. Tickets are available on a first-come, first-served basis. Supplies are limited.

WHITE HOUSE

www.whitehouse.gov/history/tours/

Tours are only for groups of ten or more. You need to contact your member of Congress to set up the tour for you. You cannot tour without going through your congressional office. Scheduling is limited, so arrange your visit as soon as possible. Must be requested a minimum of 21 days in advance of visit. Requests can be submitted up to three months in advance. Summer tours fill up quickly. Call 202-456-7041 or visit the website for more information.

Find Your Congressman -

<http://www.house.gov/representatives/find/>

Find Your Senator - <https://www.senate.gov/senators/contact/>



open late



may have
admission fees

EASTERN MARKET

www.easternmarket-dc.org

Eastern Market is one of the few public markets left in Washington, D.C. and the only one retaining its original public market function. If you need a break from touring, enjoy the arts and crafts, fresh farm goods, and flea market (Sunday only) on Capitol Hill. Eastern Market can be reached by Metro and is only one block north of the Eastern Market Metro Station on the southeast corner of 7th Street and Pennsylvania Avenue, on the Blue and Orange lines. Open Saturday and Sunday, hours vary.

FORD'S THEATER AND THE HOUSE WHERE LINCOLN DIED

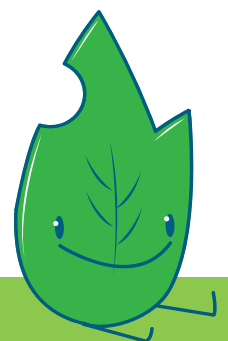
www.fordstheatre.org

A historic, still operational theater is the site of President Abraham Lincoln's assassination. The theater and the Museum in the basement are open from 9:00 a.m. until 4:30 p.m. each day. Please call the National Park Service on site (202-426-6924) to check the schedule before visiting the theater. During tourist season (March-June), same-day tickets often run out by 9:00 a.m. No more than 6 tickets given to one person. Across the street is the House Where Lincoln Died, known as the Peterson House. The house is in its original condition and has a variety of artifacts from the era. Hard Rock Café is right next door!

FRANKLIN DELANO ROOSEVELT MEMORIAL

www.nps.gov/frde/index.htm

The seven-acre site near the Jefferson Memorial depicts the 12 years of Roosevelt's presidency. Four outdoor "gallery" rooms feature ten bronze sculptures depicting President Roosevelt, Eleanor Roosevelt, and events from the Great Depression and World War II. The grounds are open 24 hours a day, seven days a week. It is fully wheelchair accessible.



HOLOCAUST MEMORIAL MUSEUM

www.ushmm.org

Admission to the permanent exhibit is free, but timed tickets are required. Tickets for each day's tours are available beginning at 9:45 a.m. outside the 14th Street and Independence Avenue entrance. No more than four tickets will be given to one person. The museum is open 10:00 a.m. – 5:20 p.m. each day. There are exhibits open to the public without tickets as well. For advance tickets for a small fee call 1-800-400-9373 or visit <http://www.ushmm.org/>

INTERNATIONAL SPY MUSEUM

www.spymuseum.org \$

Covering all things espionage, this hands-on museum walks you through the history of spying and the devices used. The Spy Museum is open 10:00 a.m. – 6:00 p.m. every day. Advanced tickets are recommended and can be purchased through their website listed above. The admission fee is \$21.95 (ages 12-64), \$14.95 (ages 7-11), children age 6 and under will be admitted free of charge.

THE NEWSEUM

www.newseum.org \$

The Newseum in Washington, D.C. is a seven-level, high-tech, and interactive museum tracing the history of news reporting from the 16th century to the present day. The Newseum offers visitors 15 theaters, 15 major galleries, two state-of-the-art broadcast studios, and a 4-D time-travel experience. The exhibition galleries explore news history, electronic news, photojournalism, world news, and how the media have covered major historical events. The hours are 9 a.m. to 5 p.m. daily. It is located on 6th St. and Pennsylvania Ave. NW, between the U.S. Capitol and the White House. The admission fee is \$22.95 for adults (19 to 64), \$18.95 for seniors (65 and older), and \$13.95 for youth (7 to 18). Children age 6 and under will be admitted free of charge. Visit the website to learn about group discount rates.

NATIONAL ARCHIVES

www.archives.gov/dc-metro/washington/

Home to the Declaration of Independence, the Constitution, the Bill of Rights, and the Magna Carta, this building hosts the foundation of American history. The Archives is open 10:00 a.m. – 5:30 p.m. every day. Last admission is 30 minutes prior to closing.

KENNEDY CENTER

www.kennedy-center.org

This national center dedicated to the performing arts is a museum in itself. With a variety of shows available and lots of halls to explore, the Kennedy Center is a wonderful way to witness the nation's commitment to the arts. Visit the top floor for the snack bar and beautiful view of the city. The Millennium Stage offers free performances daily, no tickets required.

June 23 – 25, 2017 ticketed performances include:

- **Rodgers & Hammerstein's The Sound of Music** at 7:30 p.m. (\$39.00-\$119.00) in the Opera House
www.kennedy-center.org/calendar/event/TRTSD
- **NSO Pops: The Music of John Williams in the Concert Hall**
From a faraway galaxy to the magical Hogwarts, John Williams's scores have transported moviegoers for decades. In celebration of Williams's 85th year, the NSO journeys through the storied catalogue of music composed by the most Oscar-nominated man alive. (Approx. 2 hours).
www.kennedy-center.org/calendar/event/NRPSG
- **Hedwig and the Angry Inch** in Eisenhower Theater
Innovative, heartbreaking, and wickedly funny, Hedwig and the Angry Inch is "the most exciting rock score written for the theater since, oh, ever!" (Time). This four-time Tony-winning, genre-bending sensation promises to take DC by storm! (Recommended for ages 12+) (\$59-\$119)

KOREAN WAR MEMORIAL

www.nps.gov/kowa

This memorial consists of sculptures of 19 ground troops moving toward victory in Korea, joined by the 2,400 faces of support personnel etched in a granite mural. The memorial is located near the Lincoln Memorial. The grounds are open 24 hours a day, seven days a week with park rangers available for questions 9:30 a.m. – 10:00 p.m. daily. Access this site on the Open Top Sightseeing Tour via the red and blue routes.



NATIONAL GEOGRAPHIC MUSEUM

<http://events.nationalgeographic.com/events/locations/city/washingtondc/>

At the National Geographic Museum, enjoy a wide variety of changing exhibitions that reflect the richness and diversity of our world. It is centrally located at 17th and M Streets NW near two Metro stops – Farragut North (red line) and Farragut West (blue/orange line). The museum is open 10:00 a.m. – 6:00 p.m. daily. School groups are free with an advanced reservation. There is an entry fee for chaperones.

MARTIN LUTHER KING JR. NATIONAL MEMORIAL

www.nps.gov/mlkm/index.htm

The newest national memorial opened in August 2011 and is located southwest of the National Mall. The official address of the monument, 1964 Independence Avenue, S.W., commemorates the year that the Civil Rights Act of 1964 became law. The memorial is open 24 hours and rangers are on duty to answer questions from 9:30 a.m. to 10:00 p.m. daily and to provide interpretive programs throughout the day upon request.

THE SMITHSONIAN

www.si.edu

The Smithsonian museums are the best of the nation's museums. You will find new and exciting things happening at this series of museums each visit. Most museums are open daily from 10 a.m. to 5:30 p.m. The American Art Museum and Portrait Gallery are open 11:30 a.m. to 7 p.m., admission is free.

UNION STATION

www.unionstationdc.com

The main hub for train travel in Washington, D.C., the historic Union Station houses a number of shops and restaurants along with a large basement food court! Union Station is only a short walk north of the Capitol on Columbus Circle or it can be accessed by the Metro on the Red line, and the Open Top Sightseeing Tour blue and red routes.

U.S. CAPITOL

www.visitthecapitol.gov

Located at the far end of the Mall, the Capitol serves as the business center for the legislative branch of United States Government. The Capitol Visitor Center is located on the east side of the Capitol. Due to high demand, group tours should be booked online in advance or scheduled with your Congressional Representative.

U.S. NAVY MEMORIAL

www.navyemorial.org/events/exhibits

Located off Pennsylvania Avenue, the 100-foot world map forms the plaza featuring fountains, statues, and historical exhibits of the country's time at sea. The visitor's center is open Monday through Saturday 9:30 a.m. until 5:00 p.m.

VIETNAM VETERANS MEMORIAL

www.nps.gov/vive/index.htm

The somber memorial of black granite is inscribed with the names of over 58,191 soldiers who died or remain missing from the Vietnam War. This memorial is located in front of the Lincoln Memorial and is available on the Open Top Sightseeing red route. It is open to the public 24 hours a day and park rangers are available to answer questions from 9:30 a.m. – 10:00 p.m. daily.

WORLD WAR II MEMORIAL

www.nps.gov/wwii/index.htm

The memorial is dedicated to the 16 million people who served during World War II. Located on the Mall between the Lincoln Memorial and Washington Monument, the memorial is out in the open and easily accessible to all. With beautiful ponds and fountains, the WWII Memorial is a popular place to visit this summer.

THE COOPER-HEWITT NATIONAL DESIGN MUSEUM

www.cooperhewitt.org

Cooper Hewitt, Smithsonian Design Museum is the only museum in the nation devoted exclusively to historic and contemporary design. The museum presents compelling perspectives on the impact of design on daily life through active educational and curatorial programming. The museum is open weekdays and Sundays, 10:00 a.m.–6:00 p.m. and Saturdays 10 a.m.- 9 p.m. Between 6 p.m. and 9 p.m. on Saturdays, it's pay-what-you-wish admission. Otherwise, adult tickets are \$18; students are \$9 with a student ID; youth 18 and younger are free.

GHOST TOURS

<https://washington.org/visit-dc/ghost-tours-washington-dc>

Want to be spooked? Try out one of these ghost tours through D.C. to learn about paranormal activity that haunts our nation's capital! Prices depend on tour.

ARLINGTON CEMETERY

www.arlingtoncemetery.mil

A 624-acre military cemetery that is the final resting place for Howard Taft, John F. Kennedy, Jacqueline Kennedy Onassis, and more. Experience the Changing of the Guard that occurs every hour on the hour. Dozens of memorials are on the property, such as the Space Challenger Memorial and Coast Guard Memorial. Open from 8 a.m.-7 p.m.



GEORGETOWN

<https://washington.org/dc-neighborhoods/georgetown>

There's more than shopping and great dining in this historic D.C. neighborhood. Kayak on the Potomac, tour the historic house museums and gardens, and explore the Chesapeake and Ohio canal. Have a sweet tooth? Make a stop by Georgetown Cupcake, a shop that averages 10,000 cupcakes sold daily!

U.S. BOTANIC GARDEN

www.usbg.gov

A living plant museum! Established in 1820, making it one of the oldest botanic gardens in North America. Check out the scavenger hunt to identify plants and learn about the corpse flower that stands 7'4". Admission is free. Open daily 10:00 a.m. - 5:00 p.m.

NATIONAL MUSEUM OF AFRICAN AMERICAN HISTORY AND CULTURE

<https://nmaahc.si.edu/>

Opened on Sept. 24, 2016, it is the only national museum in the U.S. that's devoted exclusively to the documentation of African American life, art, culture, and history. More than 33,000 artifacts showcased. Admission is free but timed entry tickets must be requested in advance.

NATIONAL MUSEUM OF THE AMERICAN INDIAN

www.nmai.si.edu

Check out the imagiNations activity center while you visit one of the world's most expansive collections of Native American culture. The building's architecture itself is unique and full of exhibitions and colorful activities, both inside and outside its walls. Admission is free. Open daily 10:00 a.m. - 5:30 p.m.

SECURITY MEASURES AND CAUTIONS REGARDING TOURING:

The security in all buildings in D.C. is always high. Please be ready to go through metal detectors and have bags, purses, and anything else you might be carrying, searched. The best thing to do is to limit the number of things you carry with you while touring, it will save you time. Be aware of your surroundings and location at all times.

SPECIAL EXHIBITS AT THE SMITHSONIAN MUSEUMS INCLUDE:

AIR & SPACE

- Neil Armstrong's Apollo 11 Gloves and Helmet
- Boeing Milestones of Flight Hall
- Posters of World War I

AMERICAN ART MUSEUM

- Down These Mean Streets

AMERICAN HISTORY MUSEUM

- American Democracy: The Great Leap of Faith
- Many Voices, One Nation
- Modern Medicine and the Great War
- Cultivating America's Gardens

NATURAL HISTORY

- 100 Years of America's National Park Service: Preserve, Enjoy, Inspire
- Turtle Ocean

POSTAL MUSEUM

- My Fellow Soldiers: Letters from World War I



STUFF TO EAT!

CAPITOL HILL FOOD TOUR

www.dcmetrofoodtours.com/capitol_hill.htm

This one is for the foodies out there! See through the cuisine how this neighborhood evolved by partaking in the 3-hour guided food tour of small meals reflecting 250+ years of history. \$57 includes all food and drinks. Wear comfortable clothing and shoes!

FOUNDING FARMERS

www.wearefoundingfarmers.com/locations/dc/

DC's greenest restaurant that is a favorite for tourists and locals alike whom enjoy modern comfort food. The menu is sourced from family farms in Maryland and Virginia creating seasonal, fresh, Farm-To-Table dishes. Located three blocks west of the White House.

PINSTRIPES

www.pinstripes.com/georgetown-washington/

Made-from-scratch Italian-American cuisine that offers guests bowling or bocce before or after eating. Enjoy your meal indoors or on the year-round outdoor patio. Located in historic Georgetown.

WE, THE PIZZA

www.wethepizza.com

Located on Capitol Hill, offering pizza by the slice. Many originals as well as creative pies to choose from.

TED'S BULLETIN

www.tedsbulletin.com

Breakfast served all day with pancakes as big as your head and a bakery offering homemade warm, flaky pop tarts. Lunch and dinner available, too. Metro stop: Eastern Market.

CAFÉ BERLIN

www.cafeberlin-dc.com/

Sit outside in their garden or inside their 1920's themed restaurant that specializes in authentic, German cuisine. Located on Capitol Hill near Union Station.

BOLT BURGERS

http://boltburgers.com/myres_home.jsp

High-tech, fast-casual restaurant offers certified Angus Beef, artisanal cheeses, and exclusive sauces to really make this burger joint stand out.

BAKED BY YAEL

www.bakedbyrael.com

Nut-free & kosher cake pops and cookies to satisfy your sweet tooth! Also offers freshly made bagels and is located directly across from The National Zoo.

UNION MARKET

<http://unionmarketdc.com>

Warehouse-like food market with a host of artisans offering charcuterie, empanadas, gelato & more.

