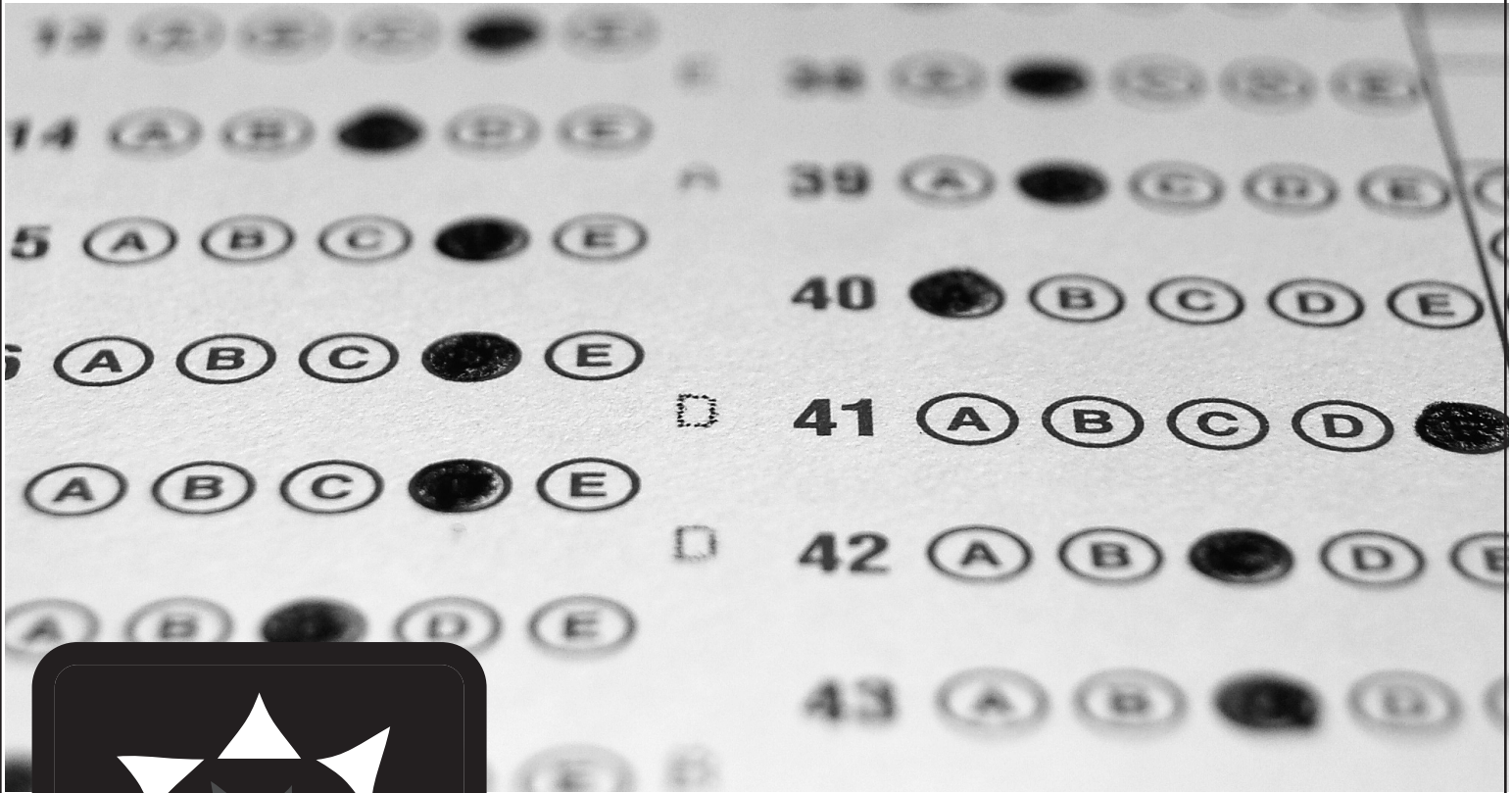




Primary Energy Poll



Grade Level:



Primary

Subject Areas:



Science

NEED



National Energy Education Development Project



Teacher Advisory Board

Constance Beatty
Kankakee, IL

James M. Brown
Saratoga Springs, NY

Mark Case
Randleman, NC

Amy Constant Schott
Raleigh, NC

Nina Corley
Galveston, TX

Samantha Danielli
Vienna, VA

Shannon Donovan
Greene, RI

Nijma Esad
Washington, DC

Linda Fonner
New Martinsville, WV

Teresa Fulk
Browns Summit, NC

Michelle Garlick
Long Grove, IL

Erin Gockel
Farmington, NM

Robert Griegoliet
Naperville, IL

Bob Hodash
Bakersfield, CA

DaNel Hogan
Tucson, AZ

Greg Holman
Paradise, CA

Barbara Lazar
Albuquerque, NM

Robert Lazar
Albuquerque, NM

Leslie Lively
Porters Falls, WV

Melissa McDonald
Gaithersburg, MD

Nicole McGill
Washington, DC

Hallie Mills
St. Peters, MO

**Jennifer Mitchell -
Winterbottom**
Pottstown, PA

Mollie Mukhamedov
Port St. Lucie, FL

Cori Nelson
Winfield, IL

Don Pruett Jr.
Puyallup, WA

Judy Reeves
Lake Charles, LA

Tom Spencer
Chesapeake, VA

**Jennifer Trochez
MacLean**
Los Angeles, CA

Wayne Yonkelowitz
Fayetteville, WV

NEED Mission Statement

The mission of The NEED Project is to promote an energy conscious and educated society by creating effective networks of students, educators, business, government and community leaders to design and deliver objective, multi-sided energy education programs.

Permission to Copy

NEED curriculum is available for reproduction by classroom teachers only. NEED curriculum may only be reproduced for use outside the classroom setting when express written permission is obtained in advance from The NEED Project. Permission for use can be obtained by contacting info@need.org.

Teacher Advisory Board

In support of NEED, the national Teacher Advisory Board (TAB) is dedicated to developing and promoting standards-based energy curriculum and training.

Energy Data Used in NEED Materials

NEED believes in providing teachers and students with the most recently reported, available, and accurate energy data. Most statistics and data contained within this guide are derived from the U.S. Energy Information Administration. Data is compiled and updated annually where available. Where annual updates are not available, the most current, complete data year available at the time of updates is accessed and printed in NEED materials. To further research energy data, visit the EIA website at www.eia.gov.



1.800.875.5029

www.NEED.org

© 2019



Printed on Recycled Paper



Primary Energy Poll Guide

Grades: K-2

Time: 20 Minutes

A Quick Look At The Energy Poll

The *Primary Energy Poll* can be used to assess students' basic energy knowledge, as well as their opinions about energy before and after your classroom energy unit.

Make one copy of the poll for each student. If you prefer, you can project the poll and have students answer the questions on a piece of paper. In either case, keep the results of the pre-poll so that students can compare their answers after your energy unit is completed.

Primary Energy Poll Answer Key

1.	A	8.	A
2.	B	9.	C
3.	A	10.	C
4.	A	11.	B
5.	C	12.	C
6.	B	13.	A
7.	A	14.	B

✓Procedure

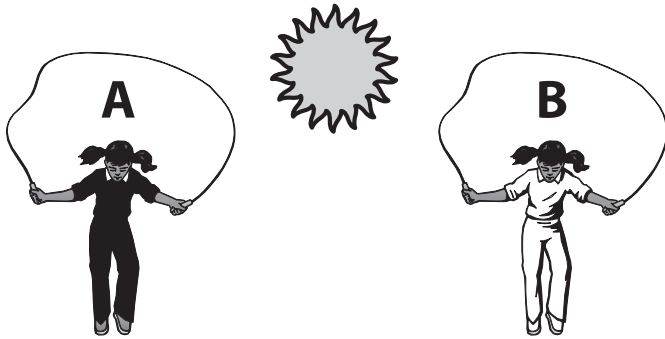
- Direct students to take the poll as honestly as possible and not to make wild guesses. Explain that the poll will be an important assessment tool to show what they have learned and how their attitudes have changed.
- Once you have administered the poll, go over the answers with the class. As a supplemental activity, discuss and chart the answers to the opinion questions. Collect the answers and save them to use after your energy unit is completed.
- Polls can be sent to NEED for analysis. We would love to see what your students are learning.
- If you are able, share your students' poll results with us at NEED by sending them to the address below via mail, fax, or email:

The NEED Project
8408 Kao Circle
Manassas, VA 20110
info@need.org
Fax:1-800-847-1820

Primary Energy Poll

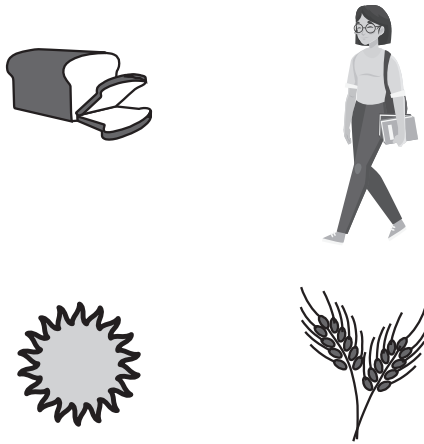
Science of Energy

1. Which child would feel hotter?



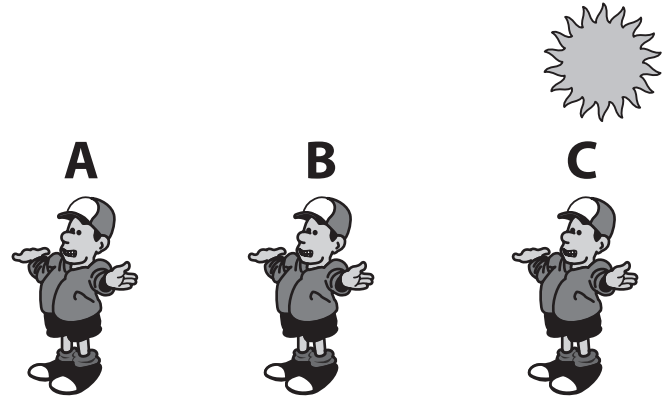
- (A) A
- (B) B

2. What order shows the flow of energy through the food chain?



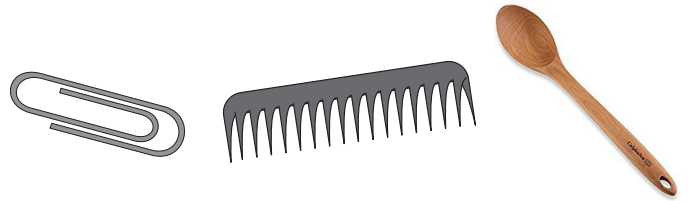
- (A) Sun, Bread, Wheat, Girl
- (B) Sun, Wheat, Bread, Girl
- (C) Bread, Wheat, Sun, Girl

3. Which boy would have the longest shadow?



- (A) A
- (B) B
- (C) C

4. Which object would a magnet attract?



- (A) The Paper Clip
- (B) The Comb
- (C) The Wooden Spoon

Primary Energy Poll

Sources of Energy

5. Which energy source is renewable?

- Ⓐ Coal
- Ⓑ Propane
- Ⓒ Solar

6. Which energy source is a fossil fuel?

- Ⓐ Wind
- Ⓑ Coal
- Ⓒ Biomass

7. Which energy source provides gasoline for cars?

- Ⓐ Petroleum
- Ⓑ Propane
- Ⓒ Natural Gas

8. Which energy source depends on the water cycle?

- Ⓐ Hydropower
- Ⓑ Solar
- Ⓒ Wind

9. Which energy source comes from deep inside the Earth?

- Ⓐ Biomass
- Ⓑ Hydropower
- Ⓒ Geothermal

10. Which energy source makes the most electricity?

- Ⓐ Propane
- Ⓑ Petroleum
- Ⓒ Natural Gas

Electricity

11. What is electricity?

- Ⓐ Moving Atoms
- Ⓑ Moving Electrons
- Ⓒ Moving Wires

12. When you turn on a TV, which item shows that electricity is being used?

- Ⓐ The Picture
- Ⓑ The Sound
- Ⓒ Both the Picture and the Sound

Primary Energy Poll

Saving Energy

13. Which is a way to save electricity?

- ☐ (A) Use a fan instead of air-conditioning to cool your house
- ☐ (B) Open the windows when you turn on the air-conditioning
- ☐ (C) Leave the lights on when you leave the room for just a few minutes

14. Which way of traveling will save the most fuel?

- ☐ (A) Ride the school bus
- ☐ (B) Walk to school
- ☐ (C) Have an adult drive you to school

Opinion

Tell us if you agree with these statements.

1. There are things I can do to save energy.

- ☐ (A) No, I don't agree.
- ☐ (B) I agree some.
- ☐ (C) Yes, I agree.

2. Learning about energy is fun.

- ☐ (A) No, I don't agree.
- ☐ (B) I agree some.
- ☐ (C) Yes, I agree.

3. I know a lot about energy.

- ☐ (A) No, I don't agree.
- ☐ (B) I agree some.
- ☐ (C) Yes, I agree.

4. I like to do activities about energy.

- ☐ (A) No, I don't agree.
- ☐ (B) I agree some.
- ☐ (C) Yes, I agree.

Primary Energy Poll

Leadership

How much do you like doing these school activities?

1. Work in a group

- ☐ A I don't like to
- ☐ B I like to some
- ☐ C I like to a lot

2. Follow directions

- ☐ A I don't like to
- ☐ B I like to some
- ☐ C I like to a lot

3. Help others in my group

- ☐ A I don't like to
- ☐ B I like to some
- ☐ C I like to a lot

4. Listen to my teacher

- ☐ A I don't like to
- ☐ B I like to some
- ☐ C I like to a lot

5. Help with classroom activities

- ☐ A I don't like to
- ☐ B I like to some
- ☐ C I like to a lot



National Sponsors and Partners

Association of Desk and Derrick Clubs Foundation
Alaska Electric Light & Power Company
American Electric Power Foundation
American Fuel & Petrochemical Manufacturers
Armstrong Energy Corporation
Association for Learning Environments
Robert L. Bayless, Producer, LLC
Baltimore Gas & Electric
BG Group/Shell
BP America Inc.
Blue Grass Energy
Bob Moran Charitable Giving Fund
Boys and Girls Club of Carson (CA)
Buckeye Supplies
Cape Light Compact–Massachusetts
Central Alabama Electric Cooperative
Citgo
CLEARResult
Clover Park School District
Clovis Unified School District
Colonial Pipeline
Columbia Gas of Massachusetts
ComEd
ConocoPhillips
Constellation
Cuesta College
Cumberland Valley Electric
David Petroleum Corporation
David Sorenson
Desk and Derrick of Roswell, NM
Desert Research Institute
Direct Energy
Dominion Energy, Inc.
Dominion Energy Foundation
DonorsChoose
Duke Energy
Duke Energy Foundation
East Kentucky Power
EduCon Educational Consulting
Edward David
E.M.G. Oil Properties
Energy Trust of Oregon
Ergodic Resources, LLC
Escambia County Public School Foundation
Eversource
Exelon
Exelon Foundation
Exelon Generation
First Roswell Company
Foundation for Environmental Education
FPL
The Franklin Institute
George Mason University – Environmental Science and Policy
Gerald Harrington, Geologist
Government of Thailand–Energy Ministry
Grayson RECC
Green Power EMC
Greenwired, Inc.

Guilford County Schools–North Carolina
Gulf Power
Harvard Petroleum
Hawaii Energy
Houston LULAC National Education Service Centers
Illinois Clean Energy Community Foundation
Illinois International Brotherhood of Electrical Workers Renewable Energy Fund
Illinois Institute of Technology
Independent Petroleum Association of New Mexico
Jackson Energy
James Madison University
Kansas Corporation Commission
Kentucky Office of Energy Policy
Kentucky Environmental Education Council
Kentucky Power–An AEP Company
Kentucky Utilities Company
League of United Latin American Citizens – National Educational Service Centers
Leidos
Linn County Rural Electric Cooperative
Llano Land and Exploration
Louisiana State University – Agricultural Center
Louisville Gas and Electric Company
Midwest Wind and Solar
Minneapolis Public Schools
Mississippi Development Authority–Energy Division
Mississippi Gulf Coast Community Foundation
National Fuel
National Grid
National Hydropower Association
National Ocean Industries Association
National Renewable Energy Laboratory
NC Green Power
Nebraskans for Solar
New Mexico Oil Corporation
New Mexico Landman's Association
NextEra Energy Resources
NEXTracker
Nicor Gas
Nisource Charitable Foundation
Noble Energy
North Carolina Department of Environmental Quality
North Shore Gas
Offshore Technology Conference
Ohio Energy Project
Oklahoma Gas and Electric Energy Corporation
Opterra Energy
Oxnard Union High School District
Pacific Gas and Electric Company
PECO
Pecos Valley Energy Committee
People's Electric Cooperative
Peoples Gas
Pepco
Performance Services, Inc.
Petroleum Equipment and Services Association
Permian Basin Petroleum Museum

Phillips 66
Pioneer Electric Cooperative
PNM
PowerSouth Energy Cooperative
Providence Public Schools
Quarto Publishing Group
Prince George's County (MD)
R.R. Hinkle Co
Read & Stevens, Inc.
Renewable Energy Alaska Project
Resource Central
Rhoades Energy
Rhode Island Office of Energy Resources
Rhode Island Energy Efficiency and Resource Management Council
Robert Armstrong
Roswell Geological Society
Salal Foundation/Salal Credit Union
Salt River Project
Salt River Rural Electric Cooperative
Sam Houston State University
Schlumberger
C.T. Seaver Trust
Secure Futures, LLC
Shell
Shell Carson
Shell Chemical
Shell Deer Park
Shell Eco-Marathon
Sigora Solar
Singapore Ministry of Education
Society of Petroleum Engineers
Sports Dimensions
South Kentucky RECC
South Orange County Community College District
SunTribe Solar
Sustainable Business Ventures Corp
Tesla
Tri-State Generation and Transmission
TXU Energy
United Way of Greater Philadelphia and Southern New Jersey
University of Kentucky
University of Maine
University of North Carolina
University of Rhode Island
University of Tennessee
University of Texas Permian Basin
University of Wisconsin – Platteville
U.S. Department of Energy
U.S. Department of Energy–Office of Energy Efficiency and Renewable Energy
U.S. Department of Energy–Wind for Schools
U.S. Energy Information Administration
United States Virgin Islands Energy Office
Volusia County Schools
Western Massachusetts Electric Company - Eversource