

Things To Do

2026 Youth Energy Conference & Awards

Memorials and Monuments

Note: Rangers are on duty to assist the visiting public from 9:30 a.m. to 10:00 p.m. daily.



Open Late



Admission Fees

Jefferson Memorial

www.nps.gov/thje

A 19-foot bronze statue inside the neoclassical marble monument memorialized Thomas Jefferson. The memorial is located across the Tidal Basin near the Bureau of Engraving and Printing. The memorial is open 24 hours a day, seven days a week.

Lincoln Memorial

www.nps.gov/linc

Located on the opposite end of the Mall from the Capitol, the Lincoln Memorial is one of the first sights to greet visitors into the city. Inside, a 19-foot marble statue of Lincoln is flanked by inscriptions of Lincoln's Gettysburg Address and his second Inaugural Address. The memorial is open 24 hours a day, seven days a week.

Franklin Delano Roosevelt Memorial

www.nps.gov/frde

The seven-acre site near the Jefferson Memorial depicts the 12 years of Roosevelt's presidency. Four outdoor "gallery" rooms feature ten bronze sculptures depicting President Roosevelt, Eleanor Roosevelt, and events from the Great Depression and World War II. The grounds are open 24 hours a day, seven days a week. It is fully wheelchair accessible.

Korean War Memorial

www.nps.gov/kowa

This memorial consists of sculptures of 19 ground troops moving toward victory in Korea, joined by the 2,400 faces of support personnel etched in a granite mural. The memorial is located near the Lincoln Memorial. The grounds are open 24 hours a day, seven days a week.

Martin Luther King Jr. National Memorial

www.nps.gov/mlkm

Located at 1964 Independence Avenue, S.W. to commemorate the year the Civil Rights Act Of 1964 became law. This memorial is the first African American honored with a memorial on the National Mall and the fourth non-president to be remembered in such a way. Each part of the memorial is significant with the many entrances and approaches to it symbolizing the openness of democracy. The memorial is open 24 hours.

U.S. Navy Memorial

www.navy memorial.org

Located off Pennsylvania Avenue, the 100-foot world map forms the plaza featuring fountains, statues, and historical exhibits of the country's time at sea. The Visitor Center features engaging and interactive exhibits and multimedia experiences and is open daily 9:30 a.m. to 5:00 p.m.

Vietnam Veterans Memorial

www.nps.gov/vive

The somber memorial of black granite is inscribed with the names of over 58,191 soldiers who died or remain missing from the Vietnam War. This memorial is located in front of the Lincoln Memorial and is open to the public 24 hours a day, seven days a week.

World War I Memorial

www.nps.gov/wwim

Located along Pennsylvania Avenue NW between 14th Street NW and 15th Street NW, across from the White House Visitor Center. There are a number of water features, both still and animated. Engraved quotes, maps, and a brief history of the war line marbled walls.

World War II Memorial

www.nps.gov/wwii

The memorial is dedicated to the 16 million people who served during World War II. Located on the Mall between the Lincoln Memorial and Washington Monument, the memorial is out in the open and easily accessible to all. With beautiful ponds and fountains, the WWII Memorial is a popular place to visit this summer.

U.S. Capitol

www.visitthecapitol.gov

Located at the far end of the Mall, the Capitol serves as the business center for the legislative branch of the United States Government. The Capitol Visitor Center is open Monday-Saturday from 8:30 a.m. – 4:30 p.m. Tours begin every 10 minutes until 3:20 p.m. Reservations are recommended and can be made on their website. All tours are free and last about an hour.

Arlington Cemetery

www.arlingtoncemetery.mil

A 624-acre military cemetery that is the final resting place for Howard Taft, John F. Kennedy, Jacqueline Kennedy Onassis, and more. Experience the Changing of the Guard that occurs every hour on the hour. Dozens of memorials are on the property, such as the Space Challenger Memorial and Coast Guard Memorial. Open daily 8:00 a.m. – 5:00 p.m.

Washington Monument

www.nps.gov/wamo

Built to honor George Washington, this 555-foot marble obelisk rises above Washington, D.C.'s skyline. Entry inside the monument requires a ticket. Admission is free but advance reservations are strongly recommended and include a \$1 processing fee.

Smithsonian Museums and Zoo

The Smithsonian museums (www.si.edu) are the best of the nation's museums! Admission is free of charge at all Smithsonian museums.

National Air and Space Museum

www.airandspace.si.edu

Visit one of the most popular museums in the world. Explore five new galleries featuring immersive lighting and technology! See the first airplane, the spacesuit worn by the first person to walk on the Moon, and much more. Open 10:00 a.m. – 5:30 p.m. daily. Free time-entry passes are required and may be obtained online. Visitors must enter through the doors on Jefferson Drive.

National Museum of African American History and Culture

<https://nmaahc.si.edu>

The only national museum in the U.S. that's devoted exclusively to the documentation of African American life, art, culture, and history. More than 33,000 artifacts showcased. Be sure to stop at Sweet Home Café, offering a diverse African-American regional fare served in the museum's massive food court. Admission is free but timed entry tickets must be requested in advance. Open Monday 12:00 p.m. – 5:30 p.m. and Tuesday – Sunday, 10:00 a.m. – 5:30 p.m.

National Museum of American History

<https://www.americanhistory.si.edu>

The museum's world class collection of over 1.7 million objects helps tell the complex history of our nation. Open daily 10:00 a.m. – 5:30 p.m. Admission is free and no tickets are required. Museum entrances are located on Constitution Avenue on the first floor and Madison Drive (National Mall) on the second floor.

National Museum of the American Indian

<https://americanindian.si.edu/visit/dc>

Visit one of the world's most expansive collections of Native American culture. The building's architecture itself is unique and full of exhibitions and colorful activities, both inside and outside its walls. Admission is free and tickets are not required. Open daily from 10:00 a.m. to 5:30 p.m.

National Museum of Natural History

<https://naturalhistory.si.edu>

The world's most popular natural history museum! Exhibit highlights include the Hall of Human Origins, National Fossil Hall, Ocean Hall, the Hope Diamond, Egyptian mummies, and O. Orkin Insect Zoo. Open daily 10:00 a.m. to 5:30 p.m. Admission is free and tickets are not required.

The National Zoo

www.nationalzoo.si.edu

Home to more than 2,200 animals! Meet Linh Mai, the Zoo's newest Asian elephant calf. Free timed Entry Passes are required for all guests. Grounds open daily 8:00 a.m. – 6:00 p.m. Animal buildings are open 9:00 a.m. – 5:30 p.m. Last admittance entry is 5:00 p.m.

National Portrait Gallery

<https://npg.si.edu/home/national-portrait-gallery>

Founded by Congress in 1962, the Gallery displays portraits of those who have made significant contributions to the history, development, and culture of the people of the United States. The "America's Presidents" exhibition is the only complete collection of presidential portraits outside the White House. Open 7 days a week from 11:30 a.m. – 7:00 p.m. Admission is free.

Smithsonian American Art Museum

<https://americanart.si.edu>

The museum is home to one of the largest and most inclusive collections of American art in the world, housed in one of the oldest public buildings constructed in early Washington. Open daily 11:30 a.m. – 7:00 p.m. Admission is free. Tickets are not required to visit the Smithsonian American Art Museum or its Renwick Gallery. The Renwick Gallery is located near the White House and presents craft and decorative art from the Museum's collection and is open daily from 10:00 a.m. – 5:30 p.m.



Additional Museums to Explore

International Spy Museum \$

www.spymuseum.org

140,000 square feet of state-of-the-art exhibits engage visitors in discovering and participating in the secret world of espionage with D.C.'s most interactive museum! Advance tickets are highly recommended and may be purchased on their website. Prices vary by day, so be sure to check their website for current admission rates. Visitors can also explore the new immersive special exhibition, *Camouflage: Designed to Deceive*, for an additional fee.

The Museum of the Bible \$

www.museumofthebible.org

This 430,000-square-foot building is located just three blocks from the U.S. Capitol. The museum showcases rare biblical artifacts spanning 3,500 years of history and includes a variety of exhibits, with level 1 featuring the Vatican Museum and Vatican Library. Floor 6 houses a fast-casual restaurant and stunning views of D.C.'s skyline. Admission fee is \$34.99 (ages 18–64), and \$24.99 (ages 5–17). Open Monday – Saturday, 9:00 a.m. – 5:00 p.m. and Sunday, 10:00 a.m. – 5:00 p.m.

National Archives Museum

<https://visit.archives.gov>

Home to the Declaration of Independence, Constitution, and Bill of Rights. These founding documents along with the Public Vaults, David M. Rubenstein Gallery, and more are open for visitors from 10:00 a.m. to 5:30 p.m. daily. Admission is free. Reservations are not required.

United States Holocaust Memorial Museum

www.ushmm.org

A living memorial to the Holocaust. The Museum is located on the National Mall, just south of Independence Avenue. Timed-entry tickets are required to enter the Museum's Permanent Exhibition only. Tickets are not required for Daniel's Story and other special exhibitions. Tickets are limited to groups of six people or less and are subject to a \$1 transaction fee. The Museum and its exhibitions are open daily from 10:00 a.m. to 5:30 p.m.

Milken Center for Advancing the American Dream

www.mcaad.org/visit

Located just steps away from the White House, this newly opened immersive museum was named a 2026 USA Today Top 10 New Museum and features curated installations and cutting-edge technology, including holograms, films, and interactive displays. Timed exhibition tickets are free. The Holodeck Experience is a \$15 fee. Open daily except Tuesday, 10:00 a.m. to 5:30 p.m.

Museum of Illusions D.C. \$

<https://moiwashington.com>

Step into a fascinating world of illusions where nothing is quite as it seems. Advance ticket purchase is recommended. Admission is \$28.95 for adults and \$23.95 for ages 5–12, (plus taxes & fees). Open Sunday–Thursday, 10:00 a.m.–8:00 p.m., and Friday–Saturday, 10:00 a.m.–9:00 p.m.

Planet Word \$

www.planetwordmuseum.org

Planet Word is an immersive language experience located at the historic Franklin School in Washington, D.C. Ideal for all ages, Planet Word is the world's first voice-activated museum with interactive galleries and exhibits bringing words and language to life in all sorts of fun ways. General admission is free. It is strongly recommended to book passes online ahead of time. Open Monday, Wednesday – Friday, 10:00 a.m. – 5:00 p.m. and Saturday – Sunday, 10:00 a.m. – 6:00 p.m.

National Building Museum \$

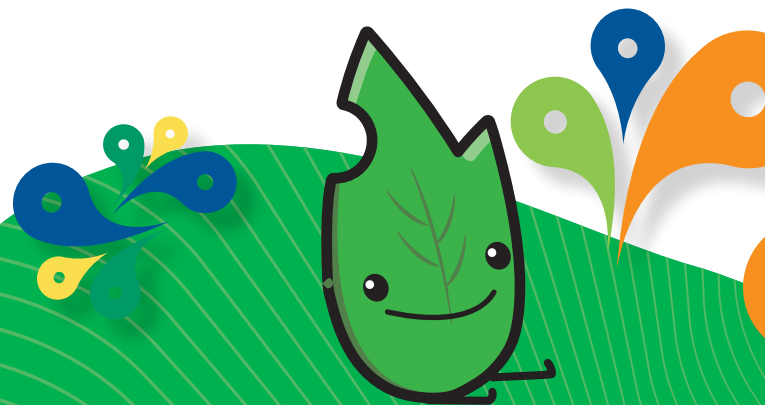
www.nbm.org

The National Building Museum inspires curiosity about the world we design and build. Check out the exhibit “Brick City” featuring iconic architecture from cities around the world through carefully recreated constructions made from LEGO® bricks. Advance-purchase tickets are suggested, but not required. Admission fee is \$10 for adult, \$7 for ages 3–17. Open Thursday – Monday, 10:00 a.m. – 5:00 p.m.

Ford's Theatre, Museum, and Petersen House \$

www.fords.org

A historic, still operational theatre is the site of President Lincoln's assassination. Go inside the historic theatre and learn about the night of the assassination. The Museum has visitors explore exhibits on Lincoln's presidency and Civil War milestones. Across the street is the Petersen House where President Lincoln died. Open daily. Every visitor needs a ticket. Advance reservations are strongly recommended. The Theatre is not included in every ticket. Certain entries only include visits to the Petersen House and Aftermath Exhibits. Visitation schedule varies; be sure to check their calendar when planning your visit.



Places of Interest

The Wharf

www.wharfdc.com

Dazzling water views, great restaurants, entertainment, and waterside style all together. Take a stroll along the piers or rent a kayak to paddle past some of D.C.'s most famous attractions.

Union Station

www.unionstationdc.com

The main hub for train travel in Washington, D.C., the historic Union Station houses a number of shops and restaurants along with a large basement food court! Union Station is only a short walk north of the Capitol on Columbus Circle.

Kennedy Center

www.kennedy-center.org

A premier cultural landmark offering world-class performances and stunning views of the Potomac River. Step into the grand Hall of States, where all 50 U.S. state flags are proudly displayed.

The REACH at the Kennedy Center

A beautiful indoor-outdoor arts campus with free events, exhibits, and scenic spaces along the Potomac—perfect for exploring art, nature, and architecture in one stop.

Arts and Ideas - President John F. Kennedy

This immersive exhibit uses the latest in digital technology to explore how the arts infused and informed the Kennedy presidency. As part of the experience, three scavenger hunts are available at each entrance for elementary, middle school, and young adults. Free admission 10:00 a.m. - midnight.

U.S. Botanic Garden

www.usbg.gov

The U.S. Botanic Garden is a living plant museum. Admission is free. The Conservatory is open 11:00 a.m. to 5:00 p.m. daily. Timed tickets are not required. Bartholdi Fountain and Gardens are open from dawn to dusk daily.

Georgetown

www.washington.org/dc-neighborhoods/georgetown

There's more than shopping and great dining in D.C.'s oldest neighborhood. Kayak on the Potomac or stroll along the historic Chesapeake and Ohio Canal. Enjoy scenic views from the waterfront all the way to Book Hill!

Tudor Place

www.tudorplace.org

Tudor Place was home to six generations of Martha Washington's descendants. With over 18,000 decorative objects, including the largest Washington Collection outside of Mount Vernon, Tudor Place sits on 5 1/2 acres in the heart of Georgetown. Open for guided 50-min. historic house tours or self-guided garden visits. Free admission, but advanced registration is encouraged. Open Tuesday - Saturday, 10:00 a.m. - 4:00 p.m. and Sunday Noon - 4:00 p.m. Entry to garden after 3:30 p.m. is not permitted.

Events

Ghost Tours

www.washington.org/visit-dc/ghost-tours-washington-dc

Want to be spooked? Try out one of these ghost tours through D.C. to learn about paranormal activity that haunts our nation's capital. See the steps from The Exorcist, the eerie Oak Hill Cemetery, the Old Stone House and much more.

Open Streets Capitol Hill

<https://openstreets.dc.gov/pages/spring-2025>

Event Date: Saturday, June 28th from 9 a.m. to 3 p.m.

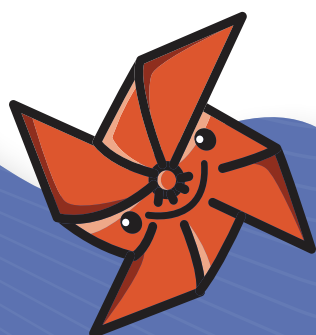
One mile of neighborhood streets will be closed to vehicles to allow people to safely walk, run, bike, and play. Open Streets will include hourly programmed classes and performances, including live music, yoga, dancing, and more. The event is free and suitable for all ages and abilities.

34th Annual BBQ Battle

<https://bbqindc.com>

June 27-28, 2026

The Most Epic BBQ, Music & Dance Party in America! 100+ free food samples, entertainment, BBQ competitions, and non-stop music & dance zones spanning Pennsylvania Avenue. Tickets required and start at \$21.60 and can be purchased online.



Things To Eat

2026 Youth Energy Conference & Awards

Founding Farmers

www.wearefoundingfarmers.com/locations/dc

D.C.'s greenest restaurant that is a favorite for tourists and locals alike who enjoy modern comfort food. The menu is sourced from family farms in Maryland and Virginia creating seasonal, fresh, Farm-To-Table dishes. Located three blocks west of the White House.

Pinstripes

www.pinstripes.com/georgetown-washington

Made-from-scratch Italian-American cuisine that offers guests bowling or bocce before or after eating. Enjoy your meal indoors or on the year-round outdoor patio. Located in historic Georgetown.

We, The Pizza

www.wethepizza.com

Located in Crystal City and on Capitol Hill, offering pizza by the slice. Many originals as well as creative pies to choose from.

Ted's Bulletin

www.tedsbulletin.com

Breakfast served all day with pancakes as big as your head and a bakery offering homemade warm, flaky pop tarts. Lunch and dinner available, too. Metro stop: Eastern Market.

Baked by Yael

www.bakedbyyael.com

Nut-free & kosher cake pops and cookies to satisfy your sweet tooth! Also offers freshly made bagels and is located directly across from The National Zoo.

Union Market

www.unionmarketdc.com

Warehouse-like food market with a host of artisans offering charcuterie, empanadas, gelato & more.

Hard Rock Cafe

www.hardrockcafe.com/location/washington-dc

Located next to Ford's Theatre in the heart of the capital city, offering American cuisine with a laid-back, music-infused atmosphere.

Georgetown Cupcake

www.georgetowncupcake.com

D.C.'s destination for gourmet cupcakes. Baked fresh daily with specially-sourced ingredients. Open for walk-in and pre-order pickup.

Skydome Restaurant

www.hilton.com/en/hotels/dcaaedt-doubletree-washington-dc-crystal-city/dining

Spectacular 360 views from a rotating rooftop restaurant atop the 15-story Hilton DoubleTree Hotel at 300 Army Navy Drive. It is the only rotating restaurant in the D.C. area. Open Tuesday to Saturday from 5:00 p.m. - 10:00 p.m. Reservations are recommended.



Near The Hotel:

Bozzelli's Deli & Pizza 0.1 mile

www.bozellideli.com

Mezeh 0.3 mile

www.mezeh.com

New Yorker Grill 0.3 mile

<https://nationallanding.org/go/new-yorker-grill>

Buffalo Wild Wings 0.5 mile

Chick-fil-A 0.5 mile

Chipotle 0.5 mile

Good Stuff Eatery 0.5 mile

<https://goodstuffeatery.com/locations/crystal-city>

